

## Company Profile

Located in Shenzhen City, China

In 2007, Keyseen HK was established.

In 2013, Keyseen China was registered.

A partner audited by Bureau Veritas.

A designer and manufacturer of LED Tube, LED Panel light, LED Downlight. All products are being exported to USA, European Countries and Australia.

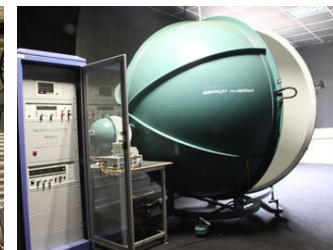
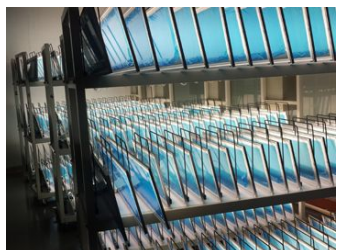
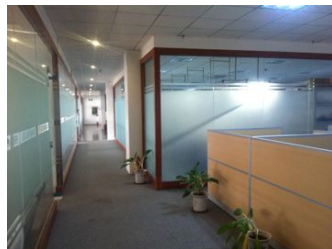
High luminaire efficacy of 140lm/W for LED panel light and 160lm/W for LED tube with a frosted cover. 2Years or 5years warranty for a different application area.

In 2016, we will become a provider of a smart lighting system based on internet of things. All the switch will be gone and you would manage the energy saving, control all the lights and get all the data (Working hrs, Working status etc) by App from iCloud.

It is our business strategy to always work with all the customers as a business team to dominate LED Light market. Please feel free to contact us when you are planning to take a green action and replace with our LED lightings all the traditional lightings in your office or house, or when you want to become one of our distributors in your local city or country.



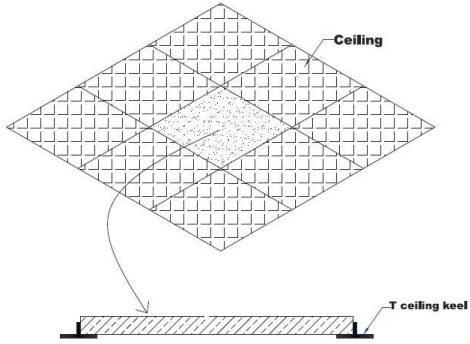
## Company Photo



## Installation

LED Lighting Keyseen&the World

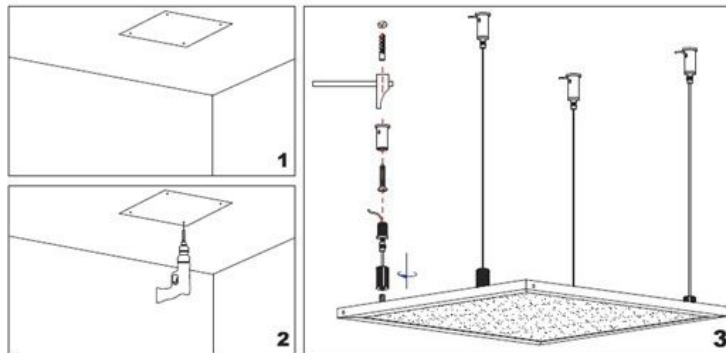
### 1. Ceiling Installaiton



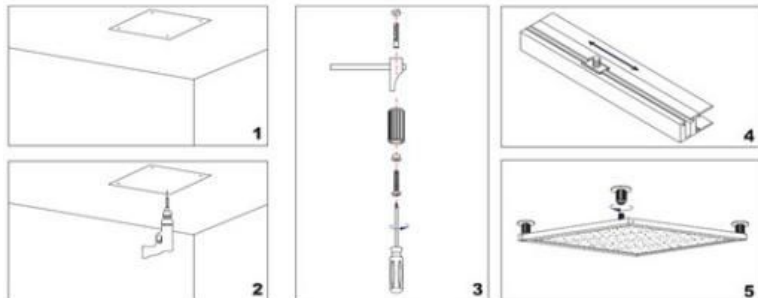
### 2. Suspension Installation

Accessories of Suspended

- X 4
- X 4
- X 4
- X 4
- X 4



### 3. Wall Monunting Installation



Accessories of Mounted

- X 4
- X 4
- X 4
- X 4
- X 4

## Package

LED Lighting Keyseen&the World



Driver&Accessories



1pcs in box

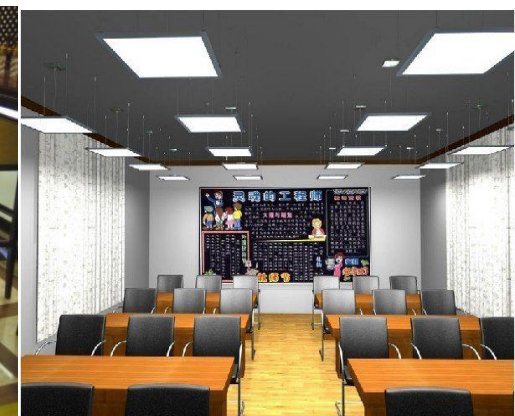


5pcs in carton



## Appllication

LED Lighting Keyseen&the World



## Series2: LED Panel Light (100lm/W) + 5Years Warranty

※ UL,PSE,SAA,CE,FCC Approved and External **Level1** Driver

Part No.	Key Features		Lumens (lm)
KL-PAN-05-3030-18-S2	18W; Size: 295mm*295mm*12mm	AC100~240V; <b>4T</b> LGP; <b>PMMA</b> Diffusor Plate; Installation: Ceilling, Suspension, Wall Mounting	1800
KL-PAN-05-6030-35-S2	35W; Size: 295mm*595mm*12mm		3480
KL-PAN-05-6060-35-S2	35W; Size: 595mm*595mm*12mm		3480
KL-PAN-05-6060-48-S2	48W; Size: 595mm*595mm*12mm		4750
KL-PAN-05-6060-60-S2	60W; Size: 595mm*595mm*12mm		5900
KL-PAN-05-3012-80-S2	80W; Size: 295mm*1195mm*12mm		7500
KL-PAN-05-6012-80-S2	80W; Size: 595mm*1195mm*12mm		7500

## Series3: LED Panel Light (100lm/W) + 2Years Warranty

※ UL,PSE,SAA,CE,FCC Approved and External **Level2** Driver

Part No.	Key Features		Lumens (lm)
KL-PAN-05-3030-18-S3	18W; Size: 295mm*295mm*12mm	AC100~240V; <b>3T</b> LGP; <b>PS</b> Diffusor Plate; Installation: Ceilling, Suspension, Wall Mounting	1800
KL-PAN-05-6030-35-S3	35W; Size: 295mm*595mm*12mm		3480
KL-PAN-05-6060-35-S3	35W; Size: 595mm*595mm*12mm		3480
KL-PAN-05-6060-48-S3	48W; Size: 595mm*595mm*12mm		4750
KL-PAN-05-6060-60-S3	60W; Size: 595mm*595mm*12mm		5900
KL-PAN-05-3012-80-S3	80W; Size: 295mm*1195mm*12mm		7500
KL-PAN-05-6012-80-S3	80W; Size: 595mm*1195mm*12mm		7500

## Series4: LED Panel Light (Economy) + 2Years Warranty

※ UL,PSE,SAA,CE,FCC Approved and External **Level2** Driver

Part No.	Key Features		Lumens (lm)
KL-PAN-05-3030-18-S4	18W; Size: 295mm*295mm*12mm	AC100~240V; <b>2.5T</b> LGP; <b>PS</b> Diffusor Plate; Installation: Ceilling, Suspension	1500
KL-PAN-05-6030-35-S4	35W; Size: 295mm*595mm*12mm		2900
KL-PAN-05-6060-35-S4	35W; Size: 595mm*595mm*12mm		2900
KL-PAN-05-6060-48-S4	48W; Size: 595mm*595mm*12mm		3850
KL-PAN-05-6060-60-S4	60W; Size: 595mm*595mm*12mm		4800

## Series5: LED Panel Light (140lm/W) + 5Years Warranty

※ UL,PSE,SAA,CE,FCC Approved and External **Level1** Driver

Part No.	Key Features		Lumens (lm)
KL-PAN-05-3030-18-S5	18W; Size: 295mm*295mm*12mm	AC100~240V; <b>4T</b> LGP; <b>PMMA</b> Diffusor Plate; Installation: Ceilling, Suspension, Wall Mounting	2500
KL-PAN-05-6030-35-S5	35W; Size: 295mm*595mm*12mm		4800
KL-PAN-05-6060-35-S5	35W; Size: 595mm*595mm*12mm		4800
KL-PAN-05-6060-48-S5	48W; Size: 595mm*595mm*12mm		6500
KL-PAN-05-6060-60-S5	60W; Size: 595mm*595mm*12mm		8000
KL-PAN-05-3012-80-S5	80W; Size: 295mm*1195mm*12mm		10000
KL-PAN-05-6012-80-S5	80W; Size: 595mm*1195mm*12mm		10000



Online Service

A designer and manufacturer of LED Tube, LED Panel light, LED Downlight

Distributors in Italy and Florida, USA

Phone#: +86-755-61865583

Cell#: +86-18664912195

Email: sales@ledlightingkeyseen.com; Skype: keyseensales;

Email: sales02@ledlightingkeyseen.com; Skype: keyledfaye

Add: 12F,Gaokehuabo Tech Industry,Road 7,Guangqiao Street,Guangming Dist, Shenzhen City,518000, China